



APEX LEGENDS SEASON 14 TIPS & TRICKS!

SKULLTOWN IS BACK AS RELIC

One of the most iconic locations on Kings Canyon is back. Everyone knows that Skulltown used to be a 3rd party heaven in the old version of the map. Because of this our first tip is how to land and Relic successfully without getting third partied. On the south side of Relic there are 3 outposts on the outer side of the wall. When landing here, chances are you can loot up and 3rd party all of the other team that landed in the center.

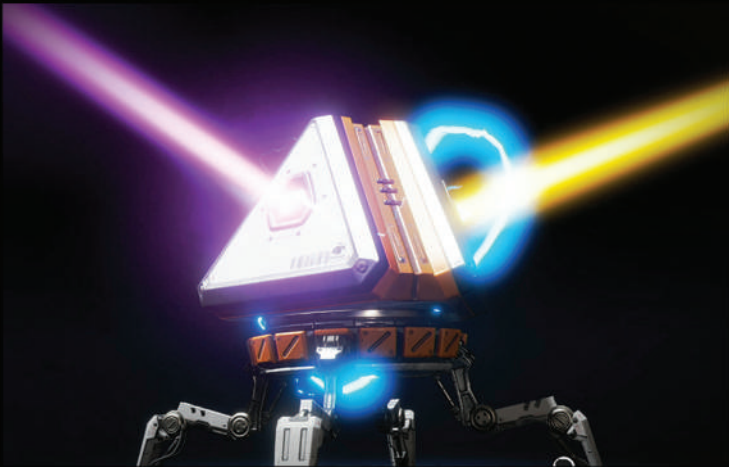


MASTER THE 30-30 REPEATER

Going into season 14, the 30-30 repeater has been given a great buff. The dual shell hop-up is now permanently integrated into the gun. Next to that, the gun now also harbors the Skullpiercer hop-up. With the rate of fire the gun has, damage farming will be easier with the buff and skullpiercer hop-up doing more damage.

USE THE VANTAGE ULTIMATE TACTICALLY

Vantage has, in essence, a 3 weapon. With the sniper using a laser sight and doing more damage every time you hit an enemy, use the weapon to open fights or 3rd parties. Using it as a 'normal' sniper won't benefit you as much since you would need your team to have at least marksman weapons. Use it as an opener or finisher to kill more efficient.



ADJUSTED LOOT TABLE

The loot table has been optimized. Meaning that you do not have to drop in huge POIs like Market, Containment or Artillery to get great loot. Look for smaller POIs to drop and increase your survival chances (especially in ranked!). Small PIOs like the buildings south of Market or the small building north of Caustic treatment will have better loot with small chances of other teams landing there.